



ANATECH ELECTRONICS INC
RF & Microwave Filters & Products

96 MHz IF Saw Filter

Part Number: AM96S687

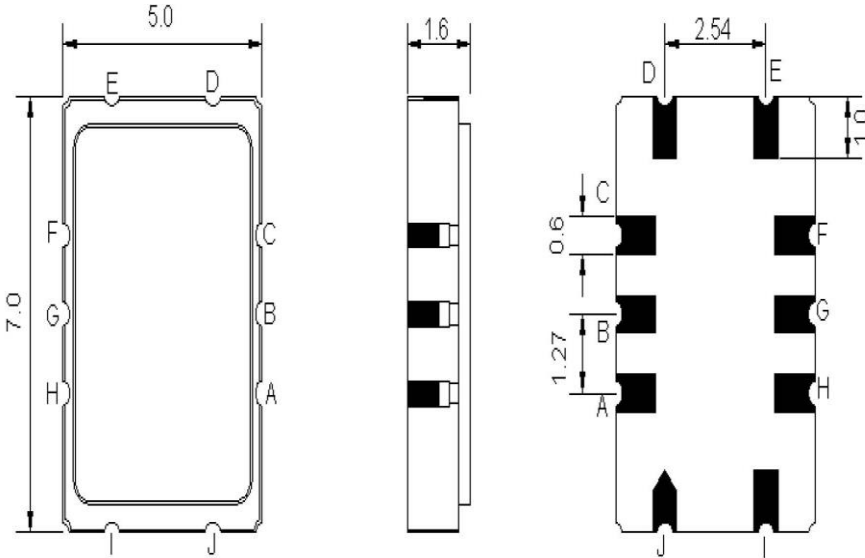


Parameters Description	Unit	Minimum	Typical	Maximum
Center Frequency (Fo)	MHz	-	96.0	-
Insertion Loss at Fo (86 ~ 106.0 MHz)	dB	-	9.5	12.0
Amplitude Ripple (86 ~ 106.0 MHz)	dB _{p-p}	-	0.65	1.2
Group Delay Ripple (86 ~ 106.0 MHz)	nsec	-	60	100
Bandwidth at -1.0 dB	MHz	-	22.0	-
Bandwidth at -40.0 dB	MHz	-	28.3	-
Temperature Coefficient	ppm/°C	-	-86	-
Relative Attenuation to IL @ Out of Passband (Rejection)				
0 ~ 68.4 MHz	dB	51	60	-
76.8 MHz	dB	40	50	-
123.6 ~ 162.8 MHz	dB	56	63	-
162.8 ~ 1000 MHz	dB	35	45	-
Input IP3	dBm	35	45	-
VSWR	-	-	3	-

Parameters Description	Unit	Minimum	Typical	Maximum
Operation Temperature Range	°C	-40	-	+80
Storage Temperature Range	°C	-40	-	+80
Maximum DC Voltage	VDC	-	-	30
Maximum Input Power	dBm	-	-	10
Source Impedance (Single Ended) ₁	Ω	-	50	-
Load Impedance (Single Ended) ₁	Ω	-	50	-
Package Size and Type	7.0 x 5.0 x 1.6 mm		S	

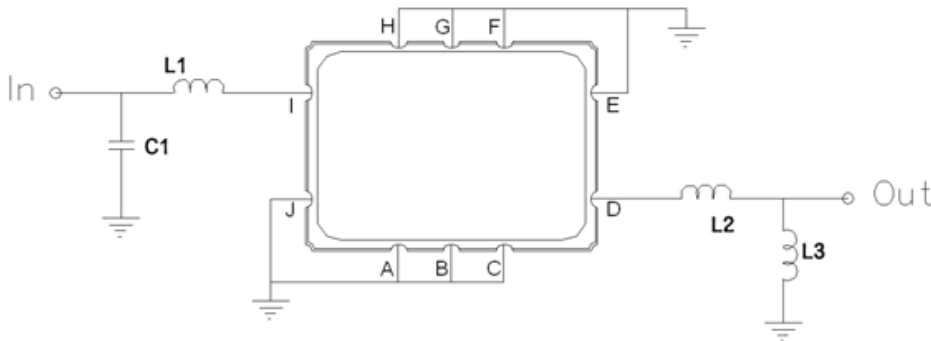


Outline Drawing:



Pin Description	
Ground	A B C F G H
Input or Return	I
Return or Input	J
Output or Return	D
Return or Output	E
Return is Ground	Single Ended Operation
Return is Hot	Differential Operation

Testing Environment:

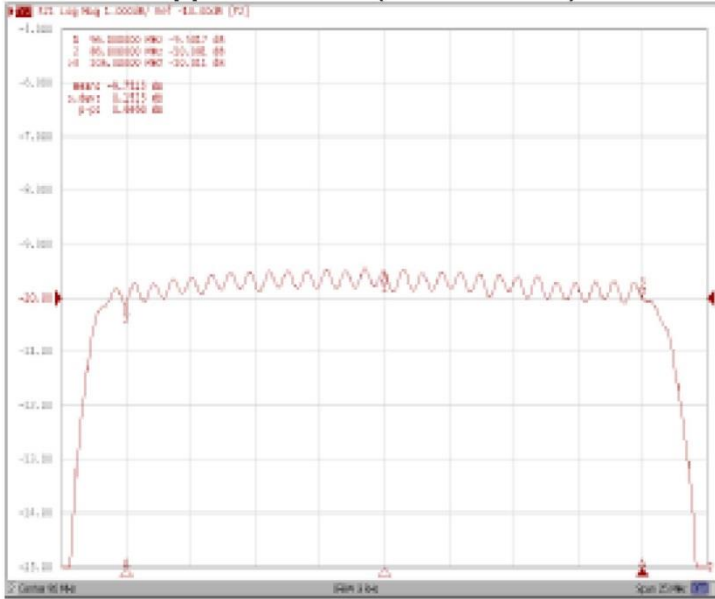


Pin Description			
Ground	L1 = 82 nH	C1 = 51 pF	Q > 35
Input	L2 = 27 nH	C2 = 56 pF	Q > 35
Source/Load Impedance	50 Ω		

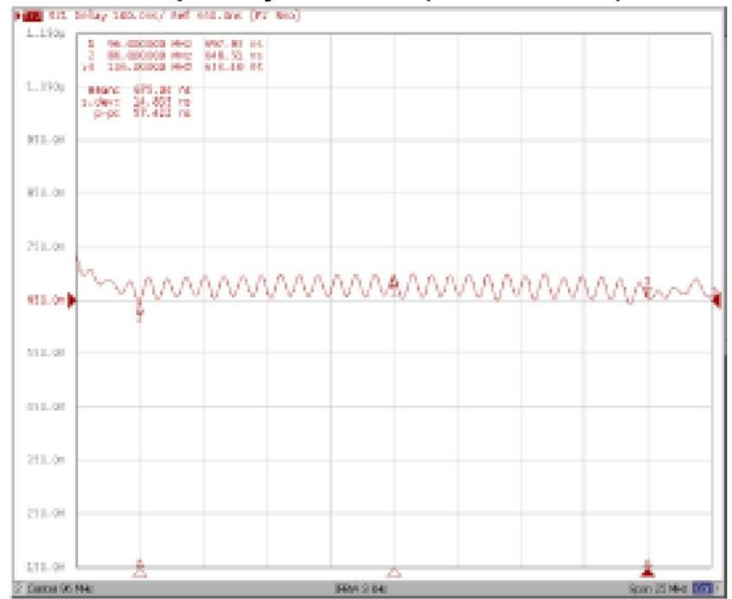


Frequency Response:

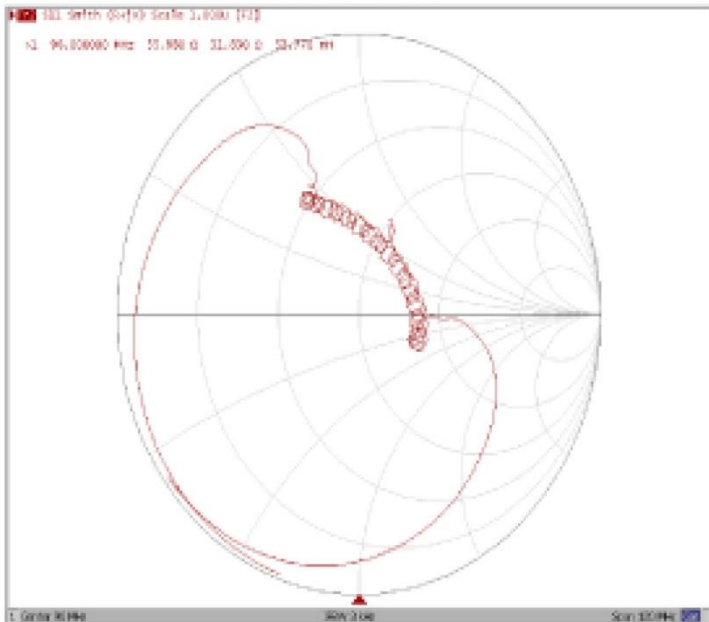
Ripple Variation (86.0~106MHz)



Group Delay Variation (86.0~106MHz)



Smith Chart S11



Smith Chart S22

